



Next Generation of Data Privacy Management

Rob Server, Product Manager

Allison Kazerounian, Director of Product Marketing

Agenda

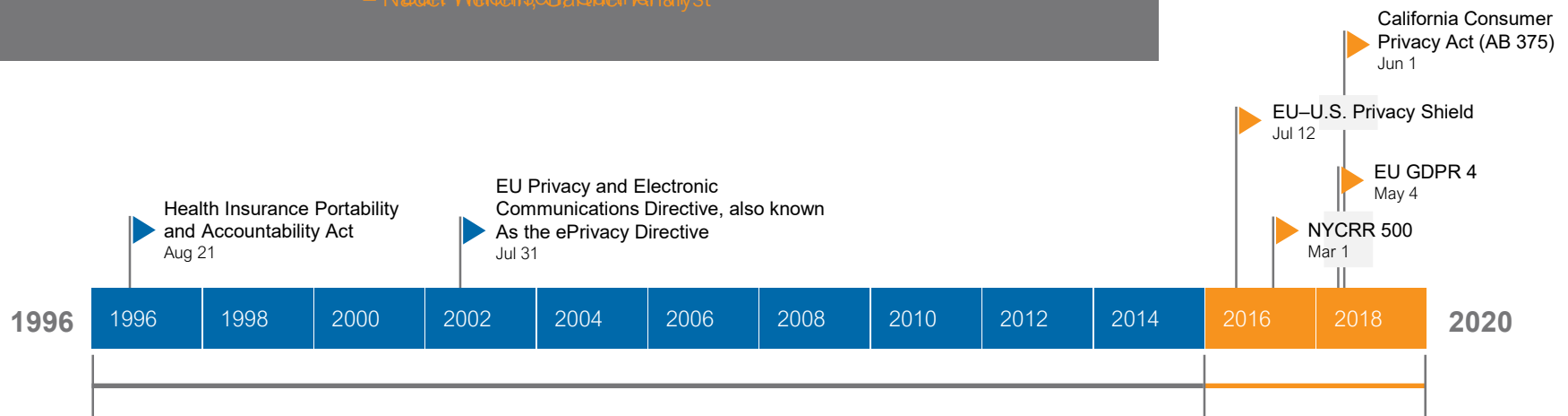
- Market influences and Spirion's Data Privacy Management Framework
- What is Data Privacy Manager and what does it do for Sensitive Data Manager customers
- Demo
- Q & A



Privacy Takes Center Stage

"Global privacy regulations developed over the past 12 months cover 10% of the population, but by 2023, 65% of the population will be."

— Nader Wilson, Gartner Analyst

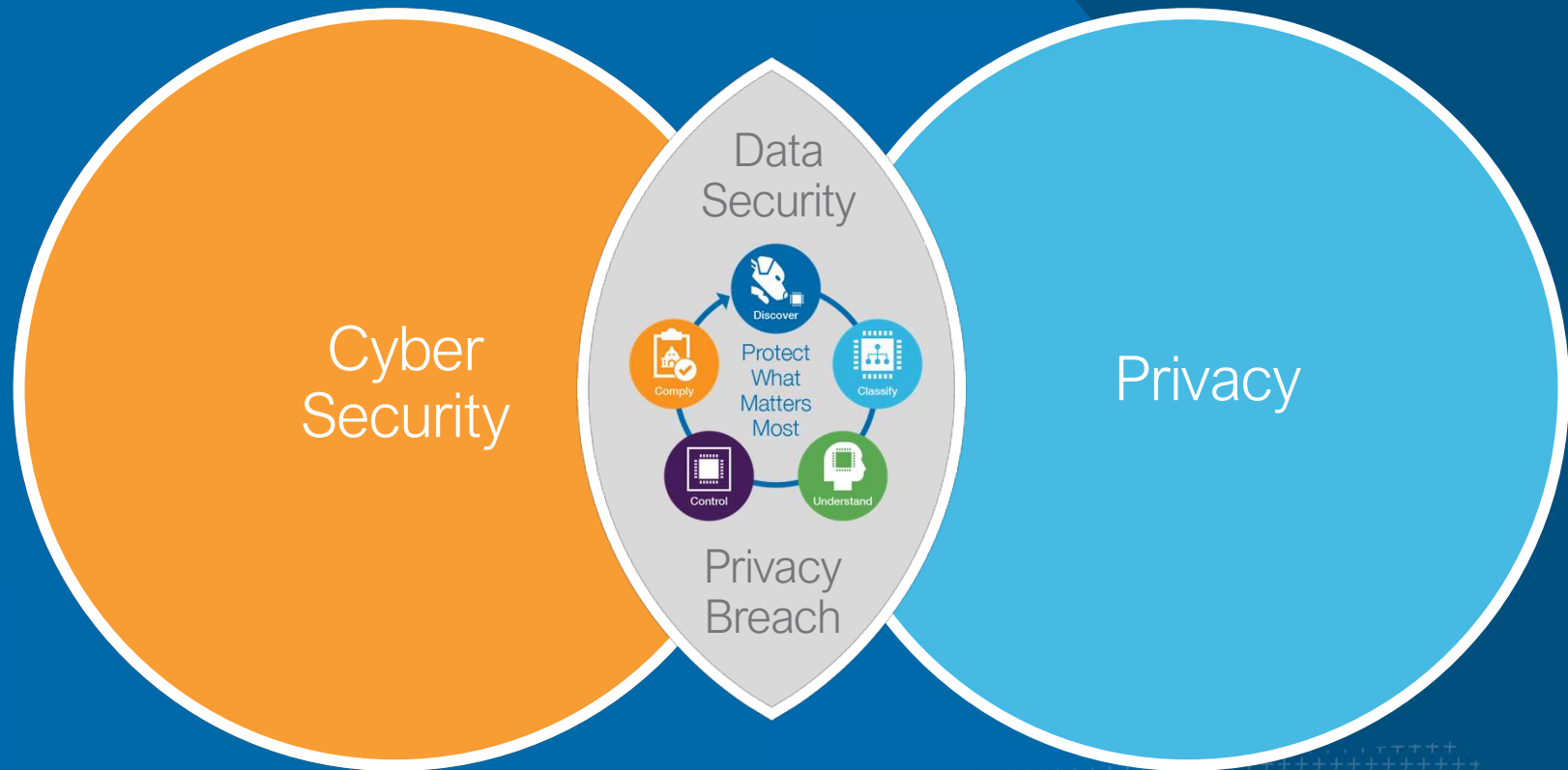


The Impossible Challenge



National Institute of Standards and Technology
Technology Administration, U.S. Department of Commerce

Protect What Matters Most



NIST

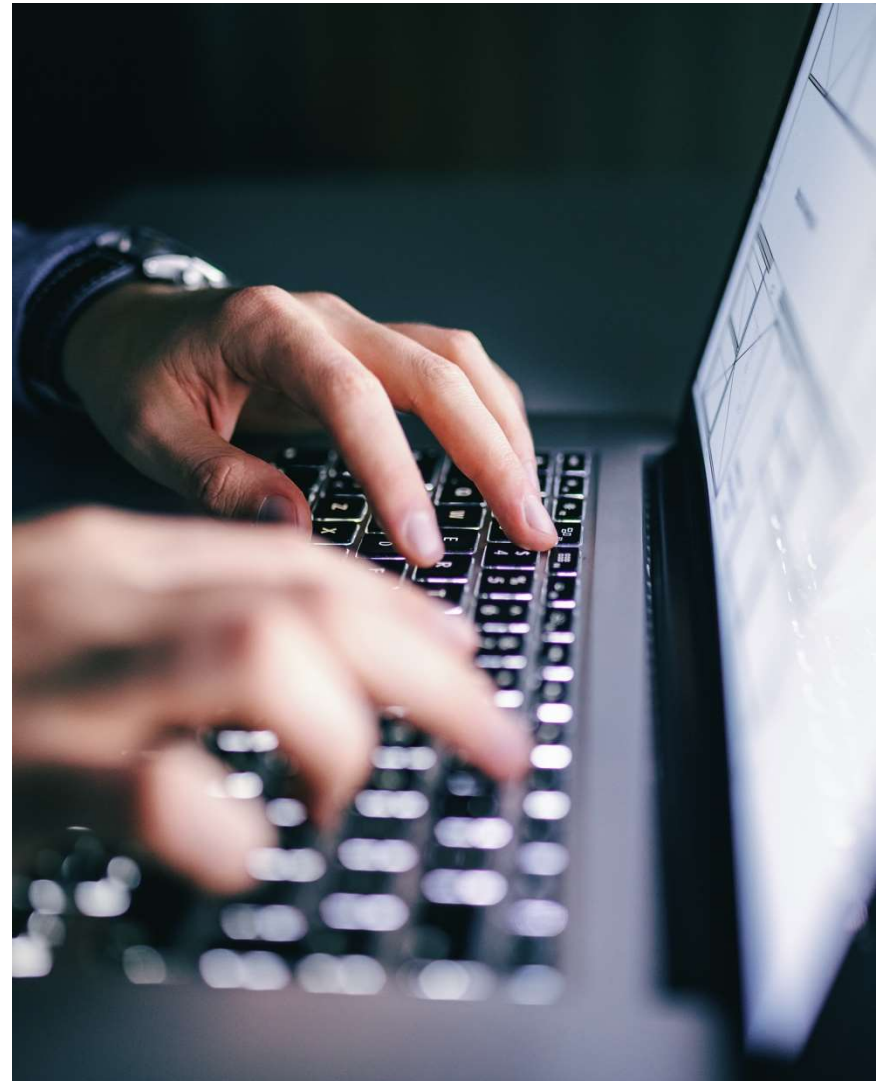
National Institute of Standards and Technology
Technology Administration, U.S. Department of Commerce

Data Privacy Management Framework



The next generation of data privacy

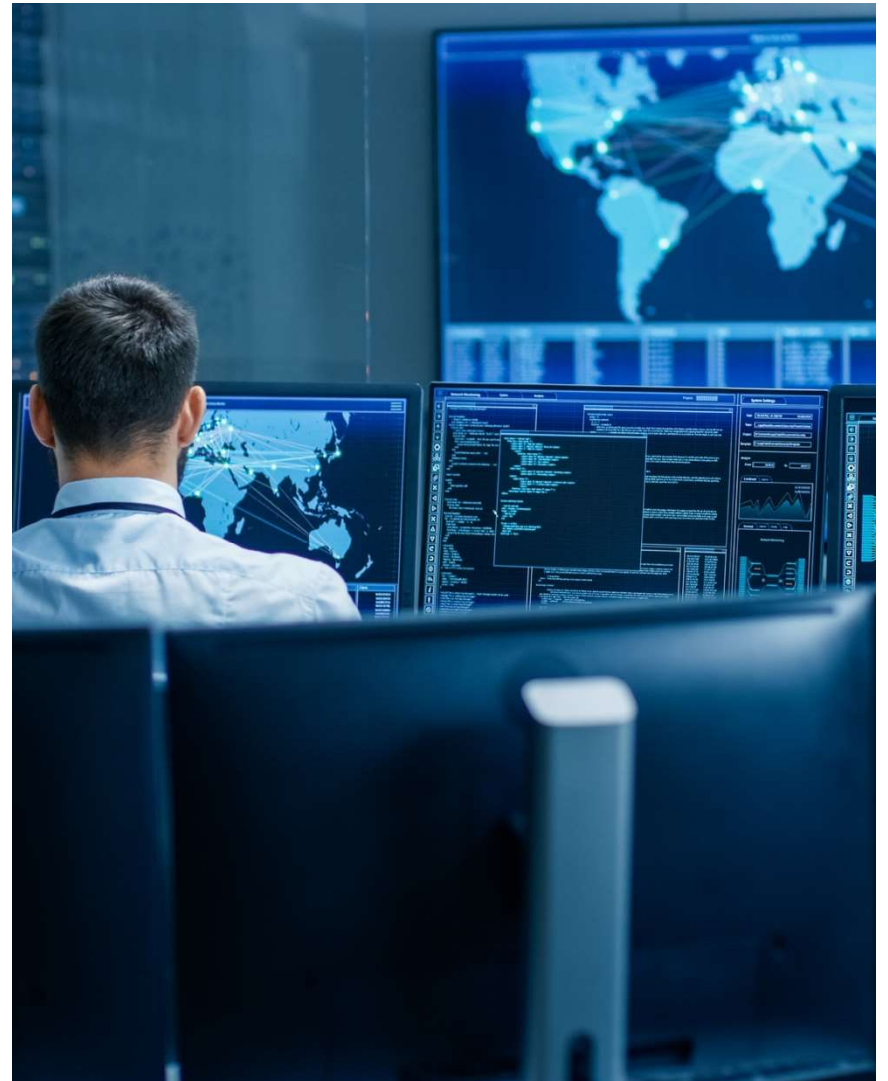
- What is Data Privacy Manager
- What does this mean for current Spirion customers



Benefits

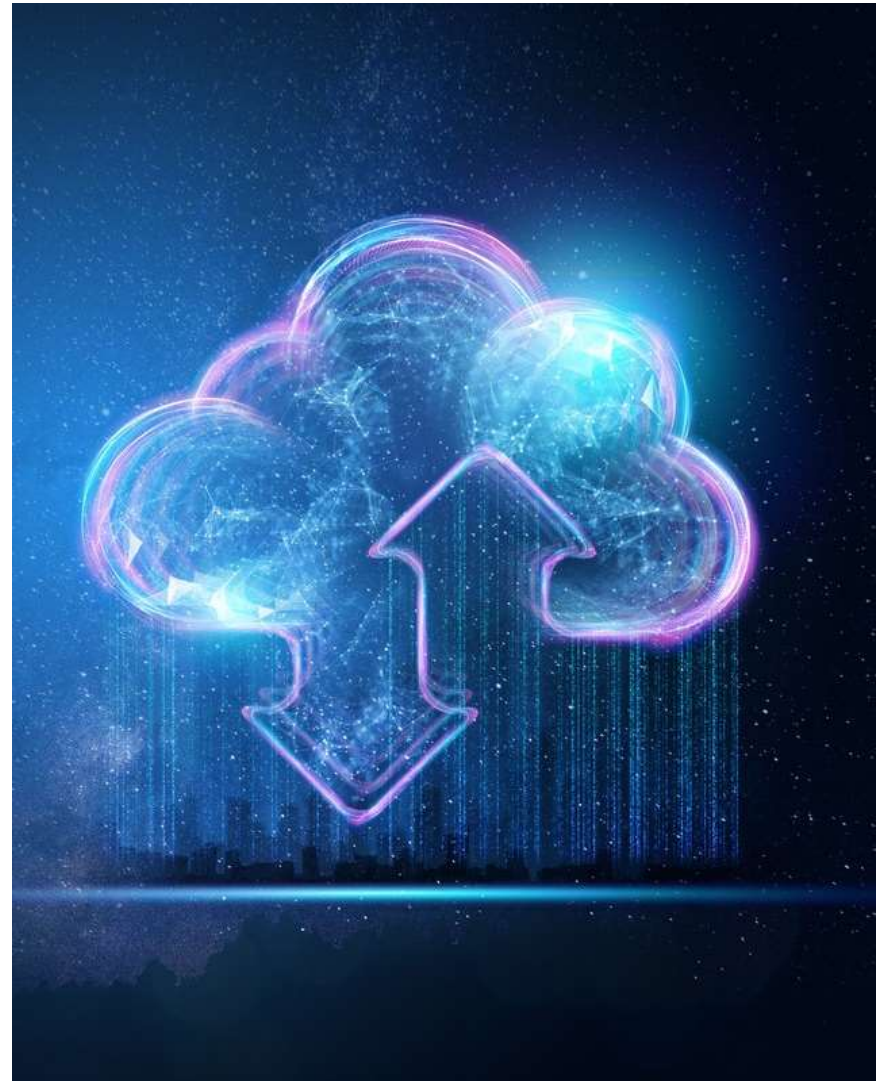
Data Privacy Manager starts by covering all of your use cases that you have today, but provides more benefits

- All on premise locations are still included
- All cloud locations are still included, but are done more effectively by design
- All current search modes and settings are maintained both agent and agentless

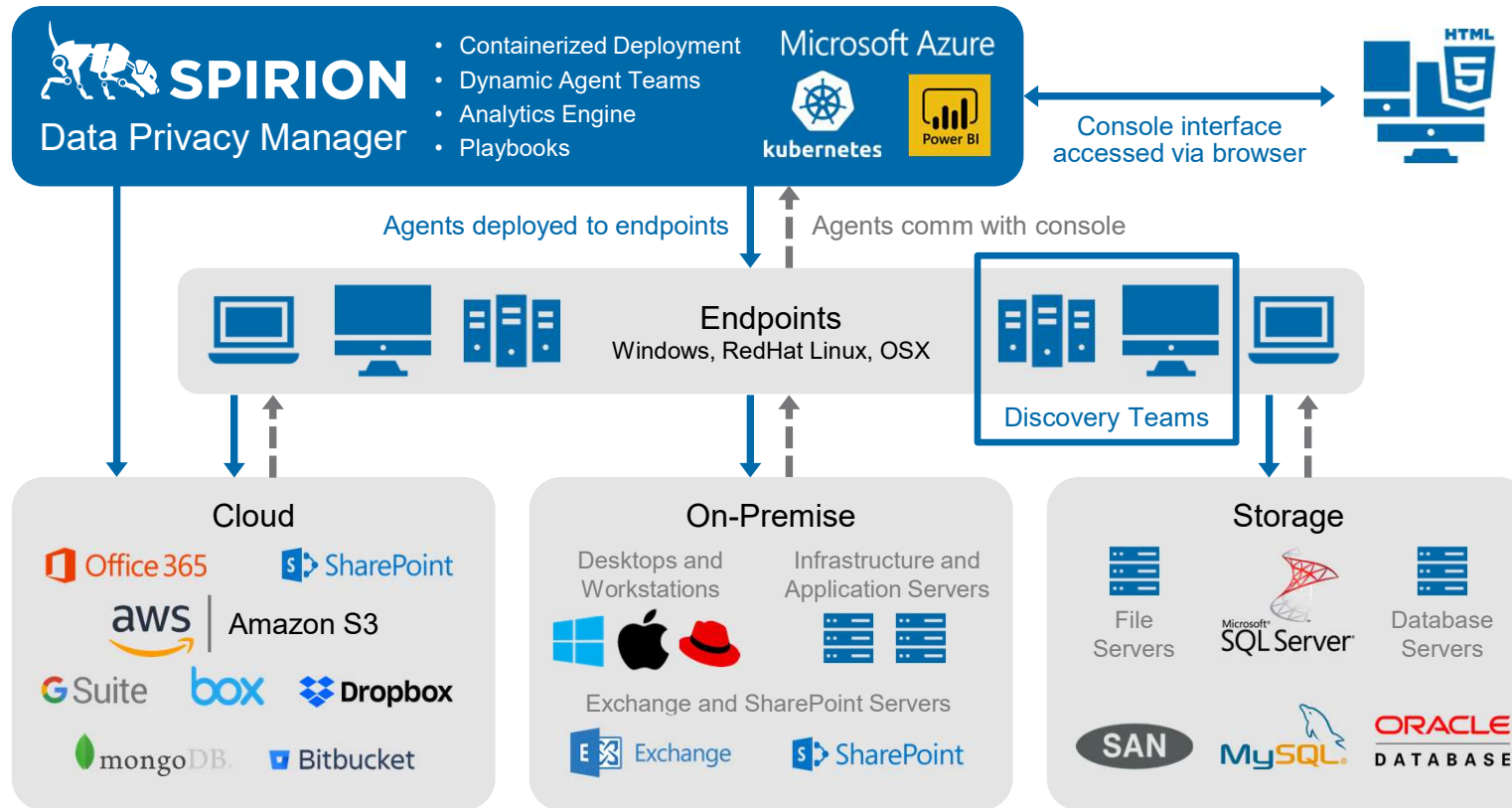


Benefits: Better performance

- Search large cloud repositories
- AWS S3 Bucket support
- Purposeful discovery and classification at the customer's desired speed
- Dynamic agent teams
- Playbooks
- Results display immediately, no need to wait until the end of the scan
- Spirion owned SaaS solution removes the complication of deployment
- Spirion hosting means no cloud ops costs for the customer
- No maintenance headaches like upgrades or infrastructure issues

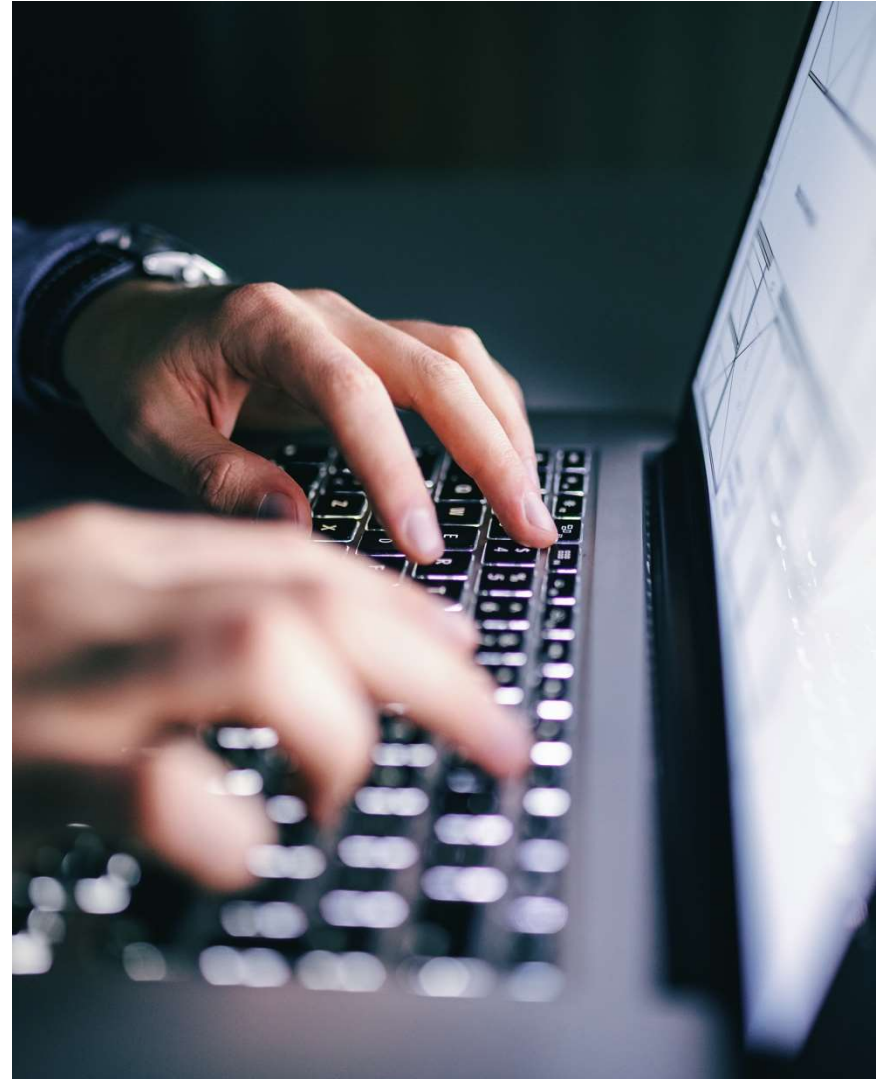


Spirion Platform Architecture: Data Privacy Manager (DPM)



Software as a Service

- Faster time to production with near zero deployment with a modern containerized application
- No infrastructure concerns: Maintained by Spirion in Azure Cloud
- Private cloud, coming soon



User Experience

Sensitive Data Manager: Policy creation

The screenshot displays the SPIRION Sensitive Data Manager interface. The top navigation bar includes links for Spyglass, Dashboard, Results, Reports, Policies (selected), Workflow, Status, Logs, and Admin. Below the navigation bar is a toolbar with icons for Policy, Definitions, Search, Increase Priority, Decrease Priority, Edit Mode, and Refresh. The main content area is divided into a left sidebar and a central panel. The sidebar, titled 'Policy List', contains a tree view with items like AZ1 Override, SP-RS-LT3 Override, Default System Policy, G-Suite Search, File Watcher, Extra Logging, Oracle Settings, and Release Embargoed Docu... The central panel shows the 'Locations' tab for policy configuration. It includes a text box explaining the checkbox logic: 'Specify the locations to include in the search. A check indicates that that location will be explicitly enabled via the policy. A partially filled checkbox indicates that that location will be explicitly disabled via the policy. A cleared checkbox indicates that that location will not be included in this policy.' Below this, there are several configuration options: 'Files' (checked) with a 'Computer' dropdown, 'Search compressed files' (checked), 'E-Mail' (unchecked) with sub-options 'Search attachments' (checked), 'Search Exchange and Outlook profiles' (checked), 'Include remote mail folders' (unchecked), 'Exclude Exchange public folders' (unchecked), and 'Exclude IMAP folders' (unchecked). Other options include 'Search Mozilla Thunderbird' (checked) and 'Browsers' (unchecked).

SPIRION Spyglass Dashboard Results Reports **Policies** Workflow Status Logs Admin

Policy Definitions Search Increase Priority Decrease Priority Edit Mode Refresh

Policy List View

Policy List

- ▶ AZ1 Override
- ▶ SP-RS-LT3 Override
- ▶ Default System Policy
- ▶ G-Suite Search
- ▶ File Watcher
- ▶ Extra Logging
- ▶ Oracle Settings
- ▶ Release Embargoed Docu...
- ▶ Endpoints
- ▶ Settings
- ▶ Search Locations
- ▶ Sensitive Data Types
- ▶ Scheduled Tasks
- ▶ Permissions

Policy Template Schedule Endpoints Results Data Types **Locations**

Specify the locations to include in the search. A check indicates that that location will be explicitly enabled via the policy. A partially filled checkbox indicates that that location will be explicitly disabled via the policy. A cleared checkbox indicates that that location will not be included in this policy.

- ☒ Files **Computer**
- ☒ Search compressed files
- ☐ E-Mail
 - ☒ Search attachments
 - ☒ Search Exchange and Outlook profiles
 - ☐ Include remote mail folders
 - ☐ Exclude Exchange public folders
 - ☐ Exclude IMAP folders
- ☒ Search Mozilla Thunderbird
- ☐ Browsers

Sensitive Data Manager: comparison continued

Search For:

Search


All Platfor... ▾

Any Status ▾

Show All

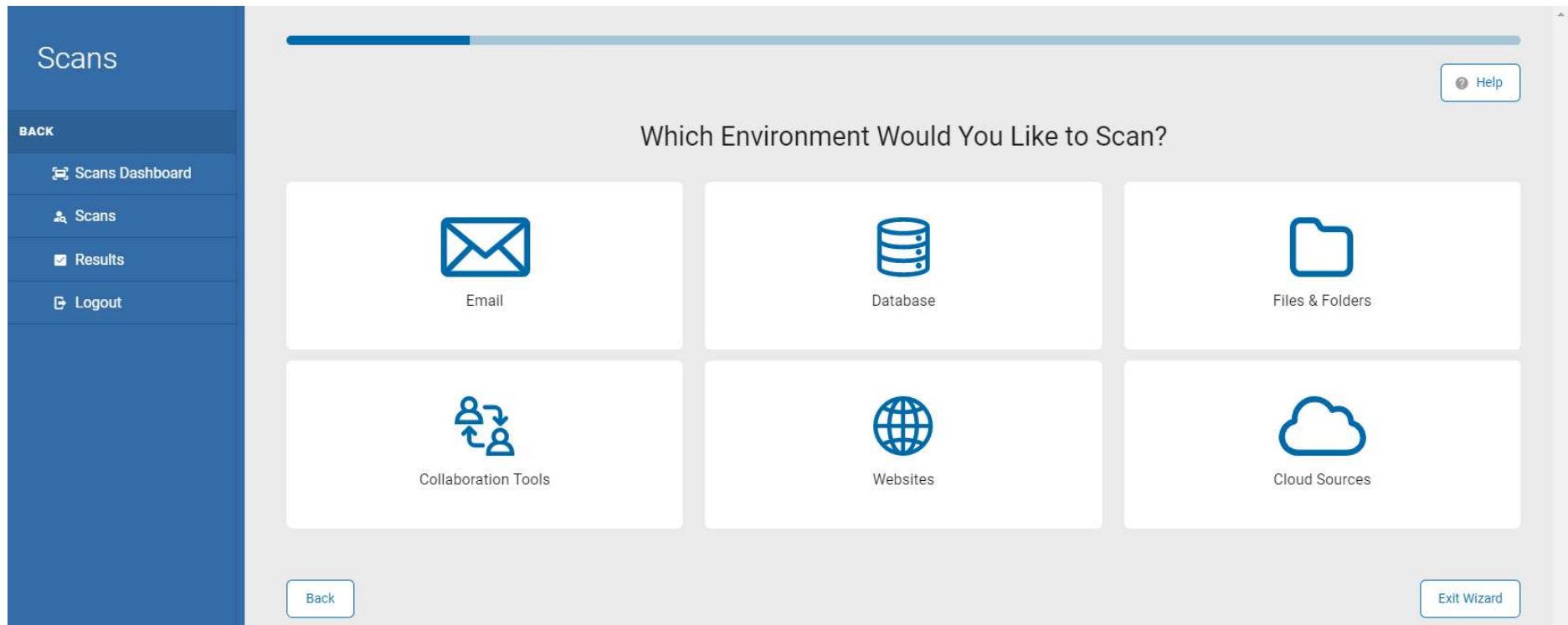
Min Version: ☐

Name	Value	Status	Description	Platform
Files				
AutolgnoreProblemSpotlightFiles	Enable for PDF and Image	Default	Skip files that cause Spotlight errors on subsequent searches	Mac
CloudTypeSearchOption	Dropbox, Microsoft OneDrive, Google Drive, Box (...)	Default	Specify the local cloud storage folders to search	Win
EnableCompressedFiles	Enable Compressed File search	Default	Search compressed files	Win, Mac, Linux
EnableFiles	Enable File search	User Set	Search files	Win, Mac, Linux
EnableShadowFiles	Do not search shadow volumes	Default	Allow searching of shadow volumes/previous versions	Win
EnableStringsFailover	Disabled	Default	Use test/strings extraction when advanced file identification fails	Win, Mac, Linux
FileAnalysisType	Analyze file content	Default	The type of analysis to perform when analyzing files	Win, Mac, Linux
FileLocations	Custom	User Set	The folder location(s) to search for files	Win, Mac, Linux
FileTypeSearchOption	Common	Default	File types to search.	Win, Mac, Linux
FollowJunctions	Do not follow	Default	Follow Windows junction/reparse points	Win
IncludeLocalVolumesWhenSearching...	Search	Default	Search locally mounted volumes when searching entire computer	Mac
IncludePropertyNamesInMetadataSea...	Do not include property names	Default	Search within property names when searching metadata	Win, Mac, Linux
LogLevel	Disabled	Default	The level of detail to log while searching files	Win, Mac, Linux
OnlySearchLocalDrivesWhenSearchin...	True	Default	Include only local drives when searching My Computer	Win, Mac, Linux
ResetFileTimestamp	Disabled	Default	Reset the timestamps on files after searching	Win, Mac, Linux
ResetRemoteFileTimestamp	Disabled	Default	Reset the timestamps on files on remote systems after searching	Win, Mac, Linux
RetrieveFileACLDuringSearch	Do not retrieve ACLs	Default	Obtain file ACLs to send to the console	Win, Mac, Linux
SearchByFileHashType	MD5	Default	The algorithm used to perform hashing when searching by file hash	Win, Mac, Linux
ShredAllTempFilesCreatedDuringSearch	Auto	Default	Enable the forced shred of all temporary files created during the search	Win, Mac, Linux
SkipFilesIdentifiedAsTextFreeBinary	Disabled	Default	Skip files unlikely to contain sensitive information	Win
SkipLinuxSystemFolders	Skip Linux system folders	Default	Skip system folders when searching Linux	Linux
SkipOfflineFiles	Do not skip	Default	Skip files whose O (offline) attribute is set	Win
UseAdvancedFileIdentification	Disabled	Default	Advanced file type identification method	Win, Mac, Linux
Access				
FileExtensions				
IFilter				
OCR				
Office2007				
PDF				





Data Privacy Manager: Progressive disclosure and policy creation



Progressive disclosure continued

Scans

BACK

Scans Dashboard


Scans


Results


Logout


Scan Configuration


Set Search Location Type


Full Computer Scan


Logged in User's Directory


Cloud Storage Folders


All Removable Drives


Custom Folder List

Back

Exit Wizard

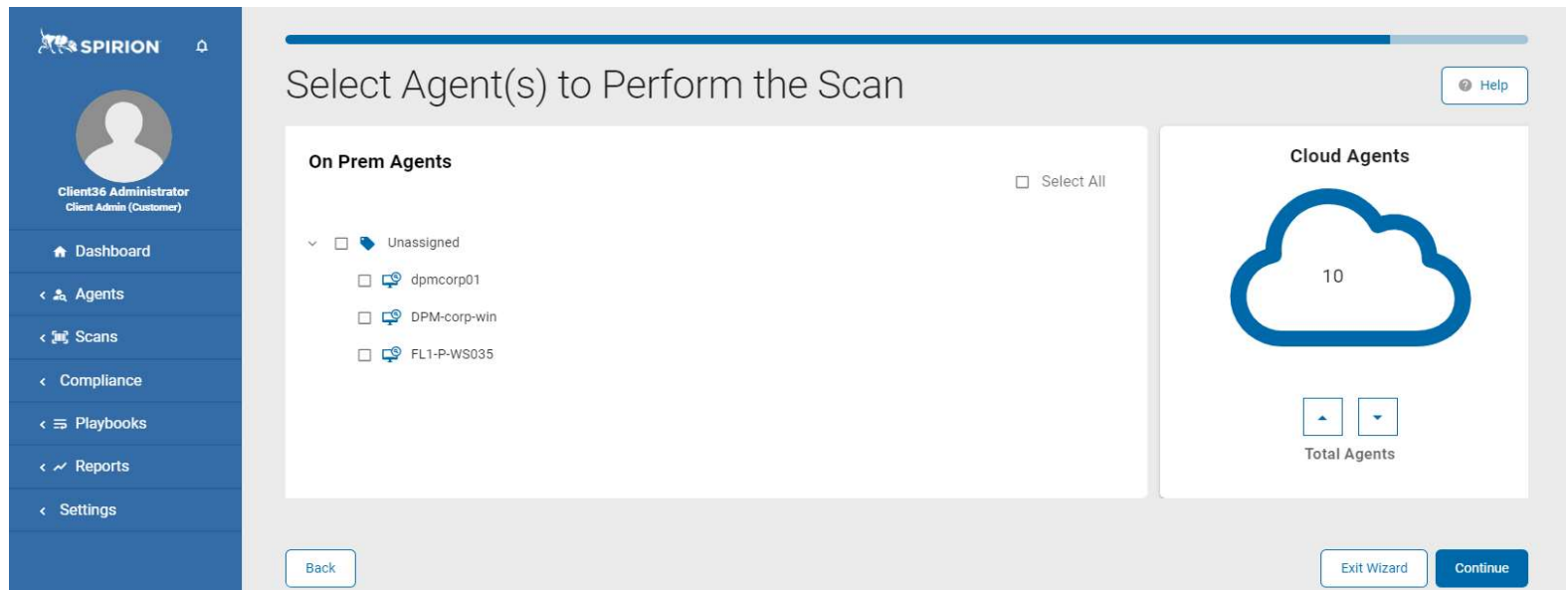
Performance

On Prem Agents

- Use all existing SDM agents today
- Legacy Discovery Teams are still supported
- Search History is now globally managed instead of individual agent based

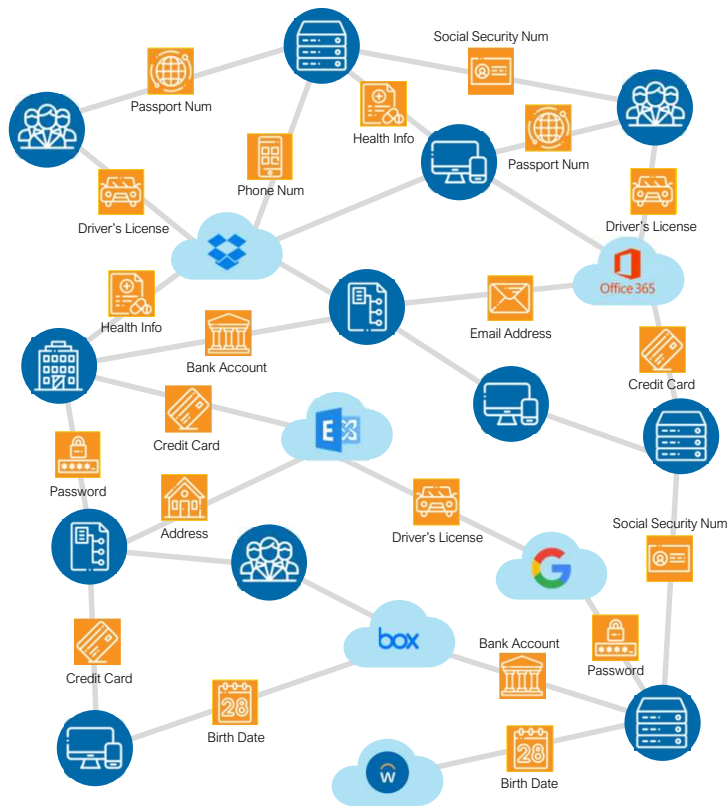
Dynamic Agent Teams and job distribution

- Search at the customer's speed- Cloud agents can be automatically deployed, added, or removed (and destroyed) from searches on the fly.
- Jobs are distributed as small as possible to render results as quickly as possible



Playbooks

What is a Playbook?

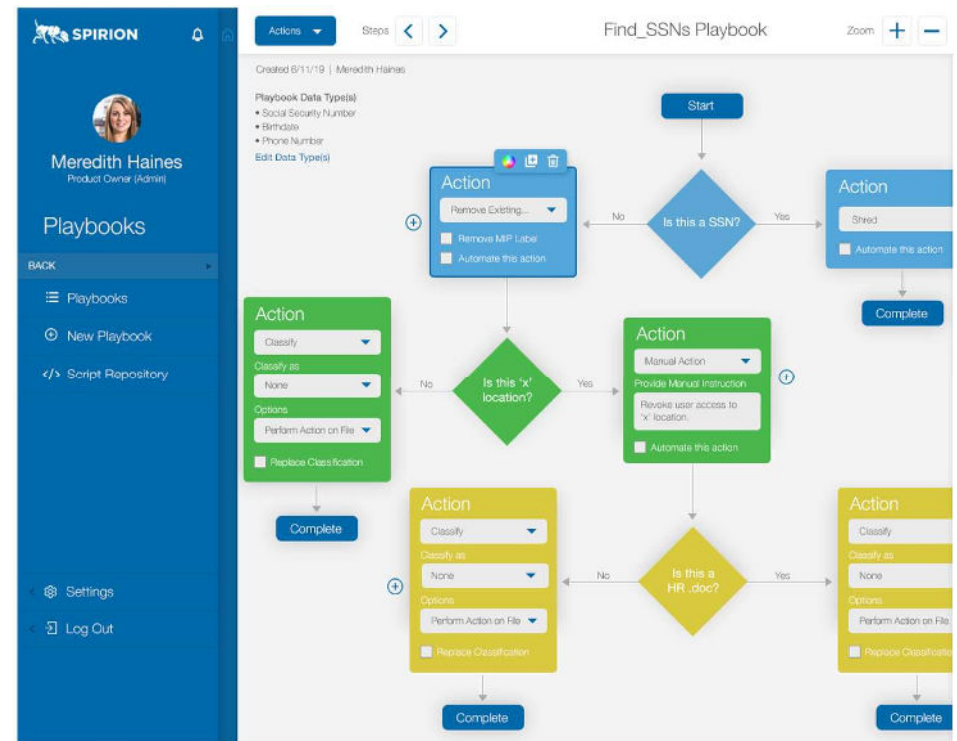


Playbooks help teams prepare for and handle incidents without worrying about missing a critical step.

<https://www.incidentresponse.com/playbooks/>

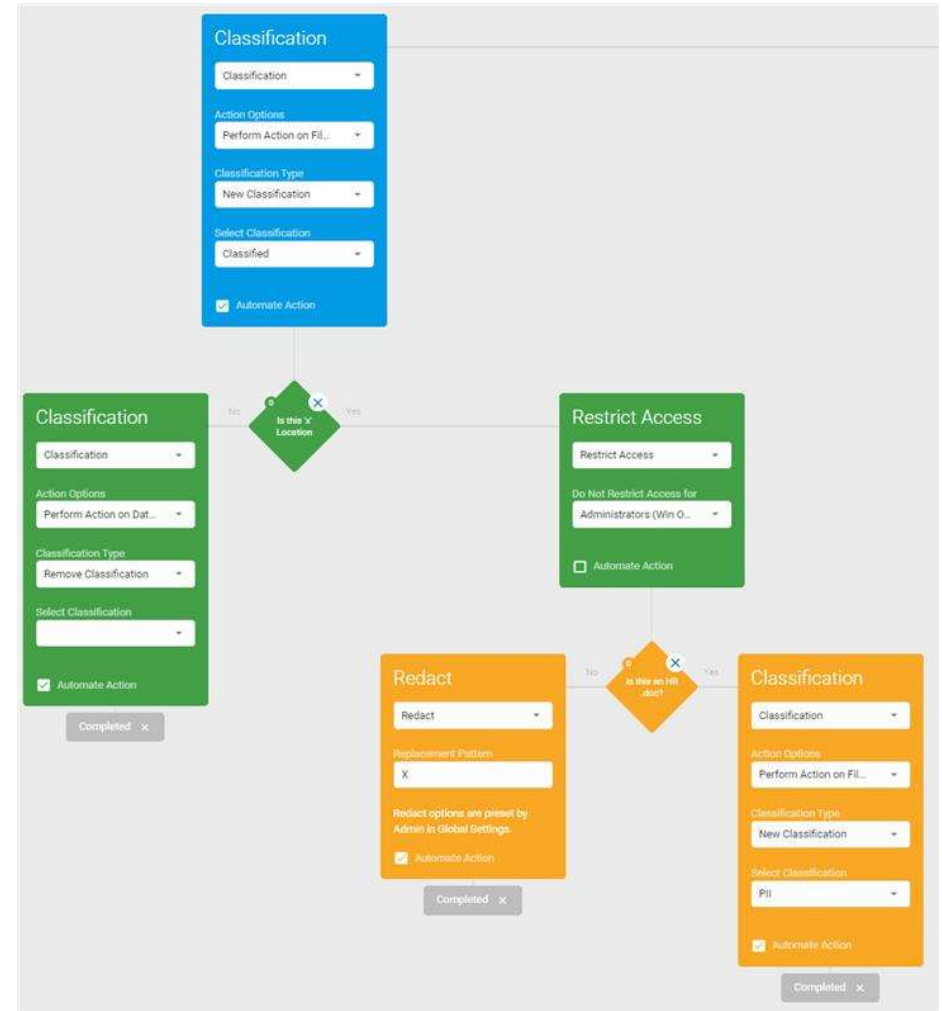
Benefits: DPM Playbooks assure adherence to every compliance step

- Scalable and more sophisticated
 - Playbooks are capable of far more complex rules than SDM Workflow
- Better user experience
 - The Playbook UX is a easy to follow flow-chart design
- Solid guidance for decisioning
 - Actions and weights are available at every step for true weighting
- Streamlines actions
 - Stack multiple actions based on decision points



Benefits: Time efficiencies with Playbooks

- **Control**
 - At any Playbook step apply actions and notifications
 - Collaborate with managers on an approval process
- **Comply**
 - View and sort results through the Playbook viewer to prioritize action



Playbooks

BACK

Playbooks

New Playbook

Script Repository

Logout

Actions

Steps

SSN Management

Zoom

Help

Start

Is this match an SSN?

Take No Action

Notify

Restrict Access

Classification

Completed

Completed

Completed

Comments

Instructions

Selected Path

Playbook Logic

Navigator

Start

Is this match an SSN?

Take No Action

Notify

Restrict Access

Classification

Completed

Completed

Completed

Comments

Instructions

Selected Path

Playbook Logic

Navigator

Power BI reporting and analytics

Reporting engine

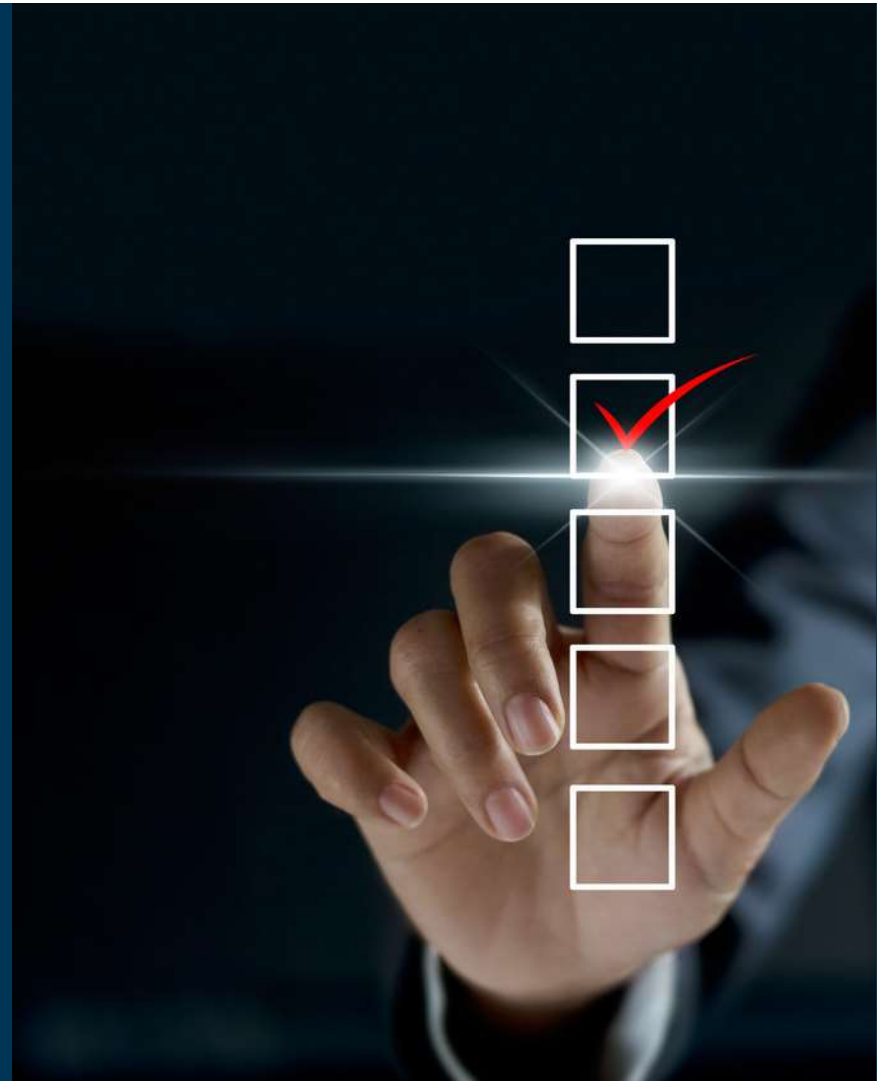
- Power BI embedded for all DPM customers
- New dashboard
- Enhanced analytics and new reporting engine



Poll question #3

Are you interested in speaking to an expert about a possible migration from SDM to DPM?

- A. Yes
- B. No
- C. Maybe later





DEMO



Thank you!

www.spirion.com